

ETP-MINI®

Mechanical clamping element

Maximum precision in the tightest of spaces.



The ETP-MINI® is ideally suited for the quick and easy installation of small components. Tight installation spaces are no problem. With only a few hand movements, the ETP-MINI® can be clamped into position, establishing a backlash-free, adjustable connection.

The ETP-MINI® R is a rust-free version of this clamping element. It is made of stainless steel, which makes it very popular for use in the pharmaceutical and food industries.

Highlights

- Ease of installation
- Good concentricity
- High radial power transmission
- Permits large tolerances
- ETP-MINI® R made of stainless steel
- Stainless steel hexagon head screws available as accessories

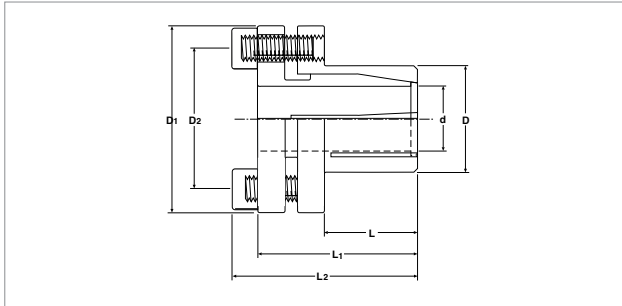
ETP-MINI®

Mechanical clamping element

Structure/function

The ETP-MINI® comprises two conical, partially slotted steel sleeves and matching tightening screws. These are designed in stainless steel for the ETP-MINI® R. When the screws are tightened, the inner sleeve is pressed against the shaft and the outer sleeve is pressed against the hub, which creates a fixed connection.

For dismantling screws are screwed into the threaded dismantling holes on the flange to release the connection. ETP-MINI® Type R has one screw more than the ETP-MINI, so that it can transmit the same torque using stainless steel screws.



ETP-MINI® technical specifications

ETP-MINI®	Dimensions							Transmittable		Screw			Moment of inertia J [kgm ² · 10 ⁻⁶]	Weight [kg]
	d [mm]	D [mm]	D ₁ [mm]	D ₂ [mm]	L [mm]	L ₁ [mm]	L ₂ [mm]	torque M [Nm]	axial force F _A [kN]	DIN 912, 12.9				
										No.	Size	M _{anz} [Nm]		
6	6	14	25	18	10	19	22	7	2.5	2	M3	2	2.1	0.03
1/4"	6.35	14	25	18	10	19	22	8	2.5	2	M3	2	2.1	0.03
8	8	15	27	20	12	21.5	25.5	20	5	2	M4	4	3.3	0.04
9	9	16	28	21	14	24	28	28	6.5	2	M4	4	4.4	0.05
3/8"	9.525	16	28	21	14	24	28	30	6.5	2	M4	4	4.4	0.05
10	10	16	28	21	14	24	28	34	6.5	2	M4	4	4.3	0.05
11	11	18	30	23	14	25.5	29.5	36	6.5	2	M4	4	6.2	0.06
12	12	18	30	23	14	25.5	29.5	40	6.5	2	M4	4	6.1	0.06
1/2"	12.7	18	30	23	14	25.5	29.5	42	6.5	2	M4	4	6.0	0.06
14	14	22	35	27	15	27.5	31.5	66	9.5	3	M4	4	13.2	0.08

ETP-MINI® Type R technical specifications

ETP-MINI®	Dimensions							Transmittable		Screw			Moment of inertia J [kgm ² · 10 ⁻⁶]	Weight [kg]
	d [mm]	D [mm]	D ₁ [mm]	D ₂ [mm]	L [mm]	L ₁ [mm]	L ₂ [mm]	torque M [Nm]	axial force F _A [kN]	DIN 912, 12.9				
										No.	Size	M _{anz} [Nm]		
R-6	6	14	25	18	10	19	22	5	1.7	3	M3	1.2	2.1	0.03
R-8	8	15	27	20	12	21.5	25.5	17	4.4	3	M4	2.7	3.3	0.04
R-9	9	16	28	21	14	24	28	20	4.4	3	M4	2.7	4.4	0.05
R-10	10	16	28	21	14	24	28	23	4.4	3	M4	2.7	4.3	0.05
R-11	11	18	30	23	14	25.5	29.5	25	4.4	3	M4	2.7	6.2	0.06
R-12	12	18	30	23	14	25.5	29.5	27	4.4	3	M4	2.7	6.1	0.06
R-14	14	22	35	27	15	27.5	31.5	48	6.5	4	M4	2.7	13.2	0.08

M ... Transmittable torque at F_A = 0

F_A ... Transmittable axial force at M = 0 at

M_{anz} ... Recommend tightening torque for the screws

Material of Type R Euronorm 1.4305, stainless steel, X10CrNiS18-9

Tolerances:

Shaft k6-h10-k6

Hub H8

We would be happy to support and advise you if you require individual dimensioning or modified designs.