

ETP-HYDRORESS®

Hydraulic locking bush

Fast and precise clamping for large shafts.



The ETP-HYDRORESS® is especially useful for the quick and precise clamping of large shafts - even after more than 1,000 mountings. It can be mounted and removed with a grease pump.

Highlights

- Variable transmittable torque/axial force thanks to adjustable mounting pressure
- Extremely easy mounting/dismantling using grease pump
- Radial and/or axial mounting connections are possible
- Precise positioning of the hub possible during mounting
- Good concentricity, even after multiple mountings

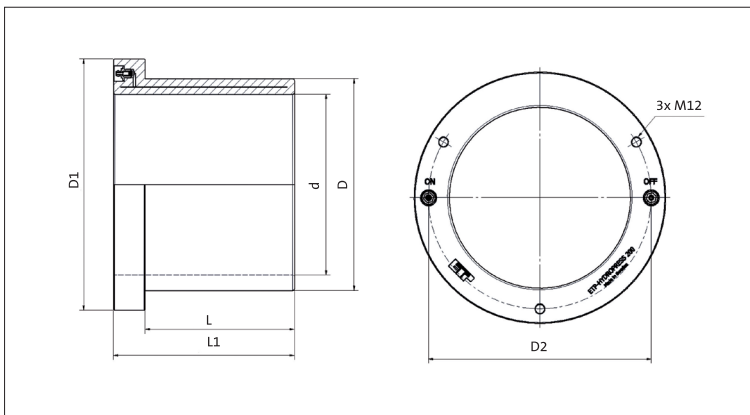


For large shaft diameters and fast mounting

Structure/function

The ETP-HYDROPRESS® is a hydraulic locking bush, consisting of a double-wall steel sleeve and a flange section. It is mounted to axial and / or radial connections using a grease pump. The pressure created in the grease pump causes the double-wall bush to expand evenly towards the shaft and hub and thereby establishes a fixed, friction-locked

connection. Dismantling simply requires the hexagon socket screw to be loosened so that the pressure can be reduced by allowing small quantities of hydraulic grease to escape. The ETP-HYDROPRESS® returns to its original state and is then easy to dismantle. This whole process can be repeated more than 1,000 times.



ETP-HYDROPRESS® technical specifications (example)

Dimensions						Transmittable torque or axial force	
d [mm]	D [mm]	D ₁ [mm]	D ₂ [mm]	L [mm]	L ₁ [mm]	M [kNm]	F _A [kN]
160	187	235	203	125	160	29	310
180	210	256	225	145	180	46	438
200	234	278	247	165	200	64	547
220	257	300	268	185	220	91	708
240	275	319	287	205	240	120	873
260	298	340	309	225	260	160	1070
280	323	364	332	245	280	210	1300
300	338	380	349	265	300	270	1600

Mounting pressure 600 bar

Tolerances

Solid steel shaft h7
Steel hub H7